

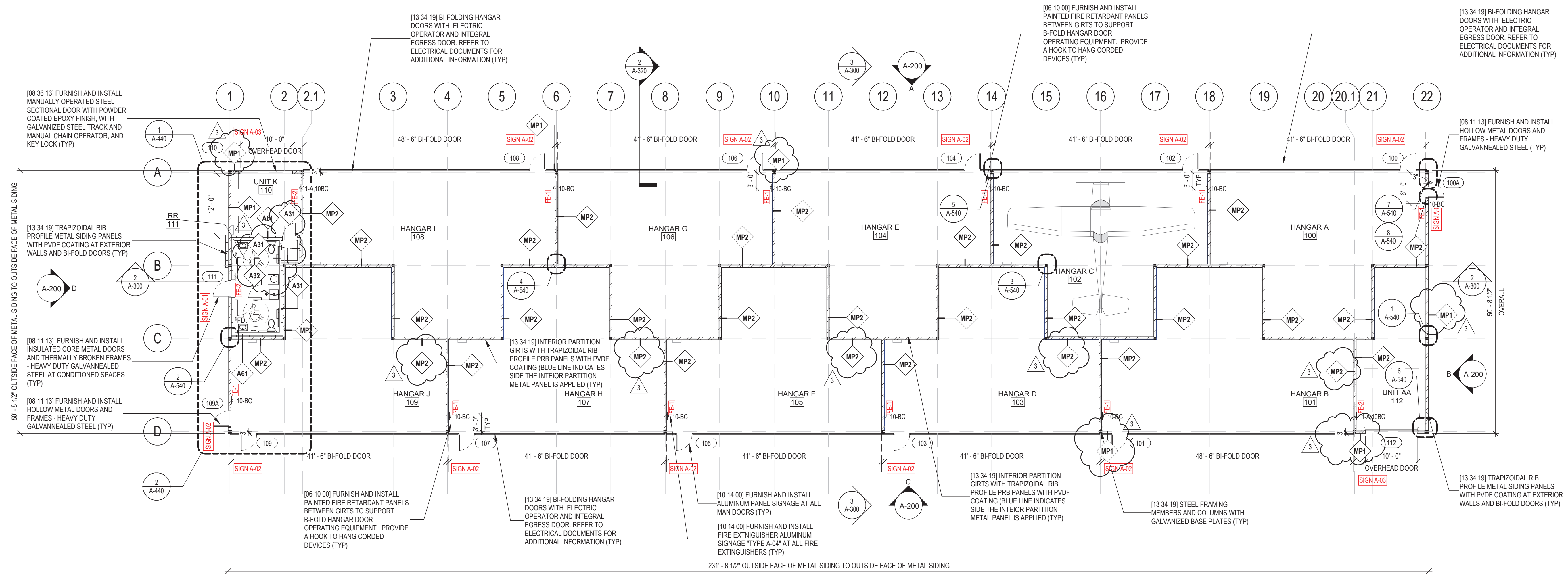
FIRE EXTINGUISHER KEY	
ITEM	FIRE EXTINGUISHER
FE-1	10-BC
FE-1	10-BC
FE-1	10-BC
FE-1	10-BC
FE-1	10-BC
FE-1	10-BC
FE-1	10-BC
FE-1	10-BC
FE-1	10-BC
FE-1	10-BC
FE-1A	10-BC 2
FE-2	1-A,10BC
FE-2	1-A,10BC

BI-FOLD DOOR THRESHOLD STEEL				
ITEM	BI-FOLD DOOR	MATERIAL	COMMENTS	FINISH
MT-3	THRESHOLD A	CUSTOM WELDED DIAMOND PLATE STEEL	SUPPLY EACH GROUPING IN THREE EQUAL PIECES	GALVANIZED
MT-3	THRESHOLD A	CUSTOM WELDED DIAMOND PLATE STEEL	SUPPLY EACH GROUPING IN THREE EQUAL PIECES	GALVANIZED
MT-3	THRESHOLD A	CUSTOM WELDED DIAMOND PLATE STEEL	SUPPLY EACH GROUPING IN THREE EQUAL PIECES	GALVANIZED
MT-3	THRESHOLD A	CUSTOM WELDED DIAMOND PLATE STEEL	SUPPLY EACH GROUPING IN THREE EQUAL PIECES	GALVANIZED
MT-3	THRESHOLD A	CUSTOM WELDED DIAMOND PLATE STEEL	SUPPLY EACH GROUPING IN THREE EQUAL PIECES	GALVANIZED
MT-3	THRESHOLD A	CUSTOM WELDED DIAMOND PLATE STEEL	SUPPLY EACH GROUPING IN THREE EQUAL PIECES	GALVANIZED
MT-3	THRESHOLD A	CUSTOM WELDED DIAMOND PLATE STEEL	SUPPLY EACH GROUPING IN THREE EQUAL PIECES	GALVANIZED
MT-3	THRESHOLD A	CUSTOM WELDED DIAMOND PLATE STEEL	SUPPLY EACH GROUPING IN THREE EQUAL PIECES	GALVANIZED
MT-3	THRESHOLD A	CUSTOM WELDED DIAMOND PLATE STEEL	SUPPLY EACH GROUPING IN THREE EQUAL PIECES	GALVANIZED
MT-3	THRESHOLD A	CUSTOM WELDED DIAMOND PLATE STEEL	SUPPLY EACH GROUPING IN THREE EQUAL PIECES	GALVANIZED
MT-4	THRESHOLD B	CUSTOM WELDED DIAMOND PLATE STEEL	SUPPLY EACH GROUPING IN THREE EQUAL PIECES	GALVANIZED
MT-4	THRESHOLD B	CUSTOM WELDED DIAMOND PLATE STEEL	SUPPLY EACH GROUPING IN THREE EQUAL PIECES	GALVANIZED

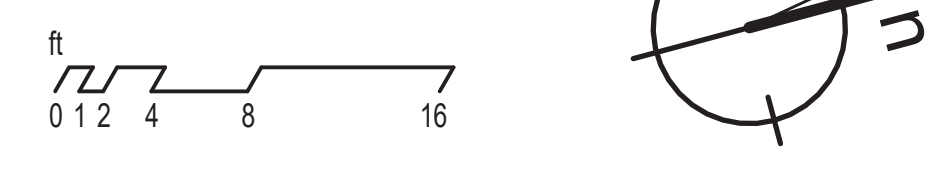
ACCESS DOOR				
ITEM	MATERIAL	COMMENTS	FINISH	
AD-1	STEEL	INSULATED ACCESS DOOR	POLYESTER POWDER COAT	
AD-1	STEEL	INSULATED ACCESS DOOR	POLYESTER POWDER COAT	
AD-2	STEEL	OVERSIZED ACCESS DOOR	POLYESTER POWDER COAT	

REFER TO SHEET A-441 FOR LOCATIONS OF ACCESS DOORS

REFER TO SHEET A-102 FOR LOCATIONS OF THRESHOLDS



1 CONSTRUCTION PLAN - MAIN LEVEL
SCALE: 3/32" = 1'-0"




THIS SHEET INTENDED TO BE VIEWED IN COLOR

Project:
CONSTRUCT NEW T-HANGAR AND TAXILANE
45 FLIGHT LINE DRIVE,
AUBURN, ME 04210

Client:

Auburn-Lewiston Municipal Airport
80 Airport Drive
Auburn, ME
t. 207.786.0631


53 Regional Drive
Concord, NH 03301


Fennick McCredie Architecture

Team:
Architect:
Fennick McCredie Architecture
70 Franklin Street
Boston, Ma 02110
t. 617.350.7900
Structural/MEP Engineer:
McFarland Johnson
49 Court St, Suite 240
Binghamton, NY 13901
t. 607.723.9421
Civil Engineer:
McFarland Johnson
49 Court St, Suite 240
Binghamton, NY 13901
t. 607.723.9421

Stamp:

CONFORMED SET

No.	Date	Revision
2	12/10/24	ADD NO.2
3	01/03/25	ADD NO.4
4	5.23.25	CONFORMED SET

Job No.: 1260
Drawn By: DM
Checked By: DMC
Issue: CONFORMED SET
Date: 5/23/25
Scale: 3/32" = 1'-0"

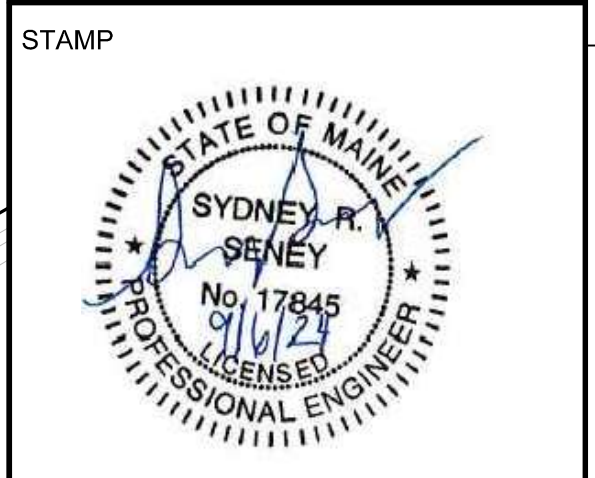
Drawing Title:
CONSTRUCTION PLAN - MAIN LEVEL

Drawing No.:
A-101



CLIENT: **AUBURN-LEWISTON MUNICIPAL AIRPORT**
AUBURN, MAINE
PROJECT: **CONSTRUCT NEW T-HANGARS AND TAXILANE**

REVISIONS		
NO.	DATE	DESCRIPTION



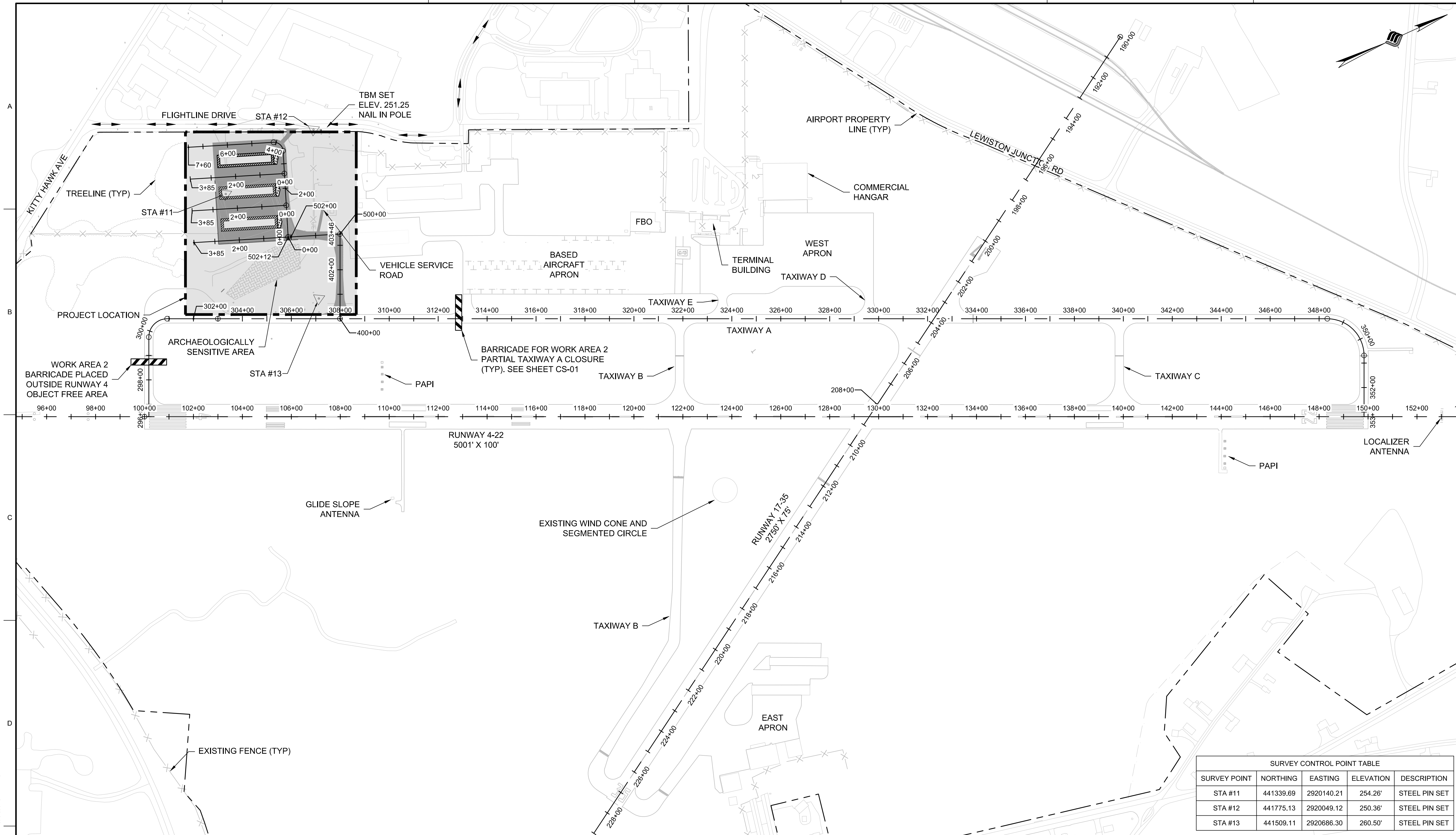
PROJECT MILESTONE
PERMITTING

IT IS A VIOLATION OF LAW FOR ANY PERSON, UNLESS THEY ARE ACTING UNDER THE DIRECT DIRECTION OF A LICENSED PROFESSIONAL ENGINEER, ARCHITECT, LANDSCAPE ARCHITECT, OR LAND SURVEYOR, TO ALTER AN ITEM IN ANY WAY, IF AN ITEM BEARING THE STAMP OF A LICENSED PROFESSIONAL IS ALTERED, THE ALTERING ENGINEER, ARCHITECT, LANDSCAPE ARCHITECT, OR LAND SURVEYOR SHALL STAMP THE DOCUMENT AND INCLUDE THE NOTATION "ALTERED BY" FOLLOWED BY THEIR SIGNATURE, THE DATE OF SUCH ALTERATION, AND A SPECIFIC DESCRIPTION OF THE ALTERATION.

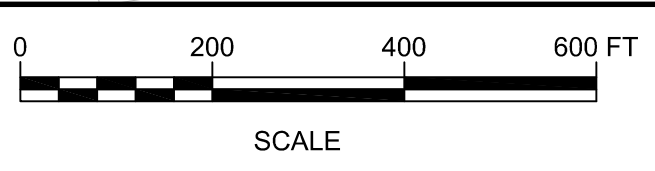
DRAWN	CLH
DESIGNED	SRS
CHECKED	MTO
SCALE	1" = 200'
DATE	9/6/2024
PROJECT	19186.01

DRAWING TITLE
GENERAL PLAN AND AIRFIELD SURVEY CONTROL

DRAWING NUMBER
GP-01
3 OF 23



SURVEY POINT	NORTHING	EASTING	ELEVATION	DESCRIPTION
STA #11	441339.69	2920140.21	254.26'	STEEL PIN SET
STA #12	441775.13	2920049.12	250.36'	STEEL PIN SET
STA #13	441509.11	2920686.30	260.50'	STEEL PIN SET



LEGEND	
	EXISTING FENCE
	PROPERTY LINE
	PROJECT LOCATION
	SURVEY POINT
	BARRICADE
	HAUL ROUTE

- SURVEY NOTES:**
- SITE FEATURES SHOWN AROUND THE PROJECT LOCATION ARE PER FIELD SURVEY PERFORMED IN JUNE 2024 BY GM2 ASSOCIATES, INC. SITE FEATURES AND TOPOGRAPHY IN THE PROPOSED PROJECT AREA WAS PERFORMED USING A LEICA 3" ROBOTIC TOTAL STATIONS AND TRIMBLE R12 HNSS/GPS RECEIVERS. OTHER OUTLYING FEATURES SHOWN ARE PER RECORD INFORMATION MCFARLAND JOHNSON HAD PREVIOUSLY RECEIVED.
 - HORIZONTAL AND VERTICAL DATUM BASED ON LEW GEODETIC CONTROL, PAC AND SAC POINT.
 - HORIZONTAL DATUM IS NAD83 MAINE STATE PLANES, WEST ZONE, US FOOT.
 - VERTICAL DATUM IS NAVD88.

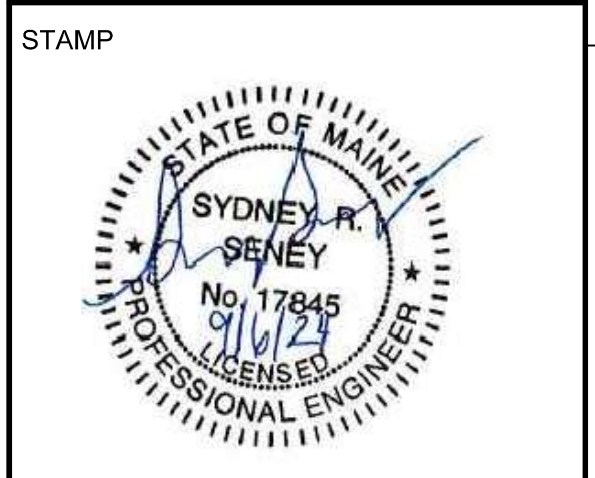
- SURVEY CONTROL NOTES:**
- SURVEY CONTROL POINTS HAVE BEEN PROVIDED TO ASSIST THE CONTROL FOR THE LAYOUT OF THE PROJECT.
 - THE CONTRACTOR SHALL BE RESPONSIBLE FOR PROTECTING ALL SURVEY CONTROL POINTS DURING CONSTRUCTION OF THE PROJECT. ALL WORK ASSOCIATED WITH THIS SHALL BE CONSIDERED INCIDENTAL TO THE PROJECT.
 - PRIOR TO THE START OF CONSTRUCTION, THE CONTRACTOR SHALL LOCATE, DETERMINE THE DISTANCES BETWEEN POINTS AND CONFIRM THE ELEVATIONS BY INVERSING BETWEEN THE CONTROL POINTS. ANY DISCREPANCIES FOUND BETWEEN THE COMPUTED DISTANCES AND THE NORTHING AND EASTING COORDINATES AND THE ELEVATIONS PROVIDED SHALL BE BROUGHT TO THE ATTENTION OF THE ENGINEER IMMEDIATELY.

K:\AUBURN-LEWISTON MUNICIPALITY\19186.01_CDS_HANGAR_DRAWINGS\SHEET FILES\PERMITTING\19186.01-GP-01.DWG



CLIENT: **AUBURN-LEWISTON MUNICIPAL AIRPORT**
AUBURN, MAINE
PROJECT: **CONSTRUCT NEW T-HANGARS AND TAXILANE**

REVISIONS		
NO.	DATE	DESCRIPTION



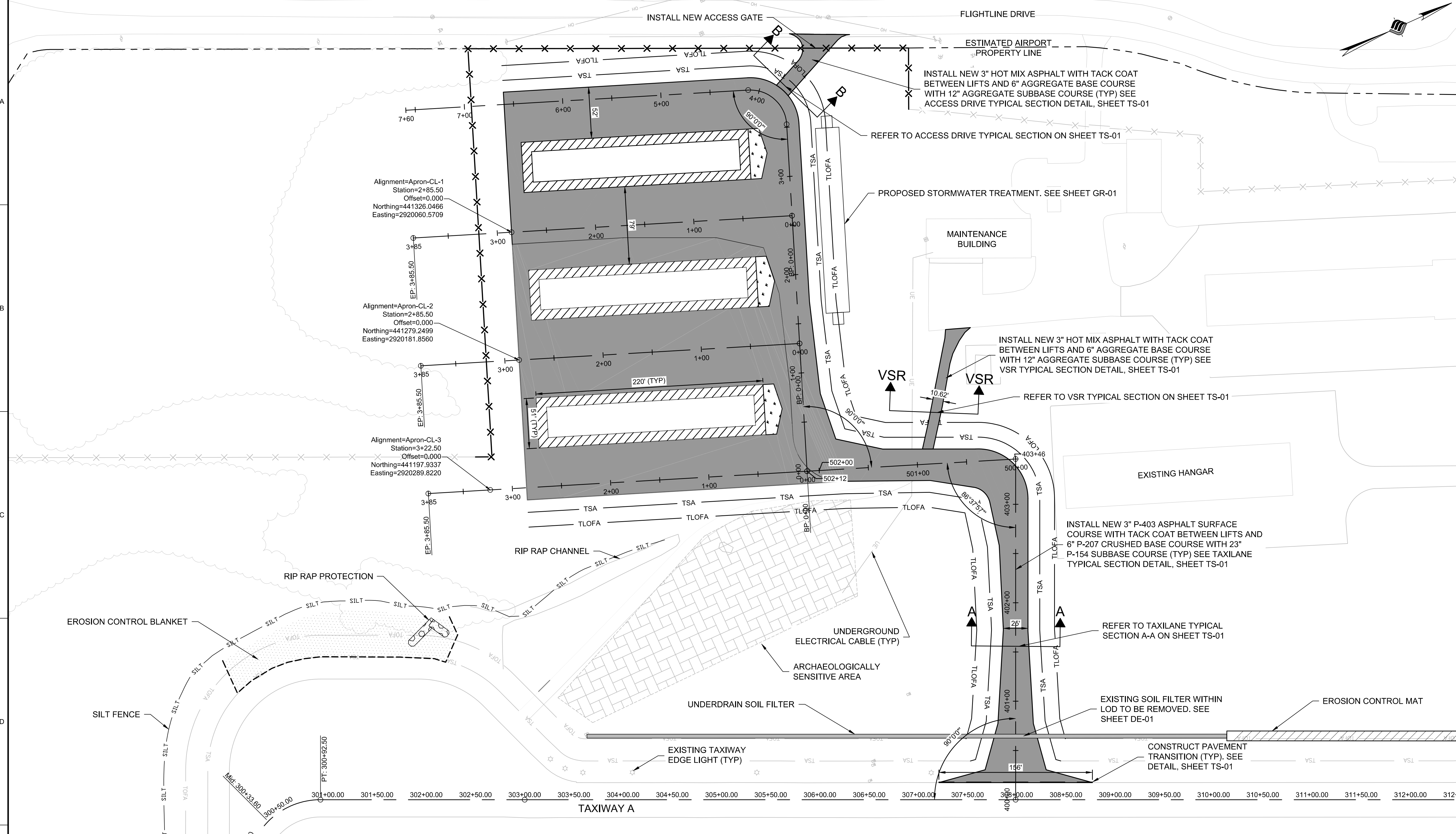
PROJECT MILESTONE
PERMITTING

IT IS A VIOLATION OF LAW FOR ANY PERSON, UNLESS THEY ARE ACTING UNDER THE DIRECT DIRECTION OF A LICENSED PROFESSIONAL ENGINEER, ARCHITECT, LANDSCAPE ARCHITECT, OR LAND SURVEYOR, TO ALTER AN ITEM IN ANY MANNER, IF AN ITEM BEARING THE STAMP OF A LICENSED PROFESSIONAL IS ALTERED, THE ALTERING ENGINEER, ARCHITECT, LANDSCAPE ARCHITECT, OR LAND SURVEYOR SHALL STAMP THE DOCUMENT AND INCLUDE THE NOTATION "ALTERED BY" FOLLOWED BY THEIR SIGNATURE, THE DATE OF SUCH ALTERATION, AND A SPECIFIC DESCRIPTION OF THE ALTERATION.

DRAWN	CLH
DESIGNED	SRS
CHECKED	MTO
SCALE	1" = 50'
DATE	9/6/2024
PROJECT	19186.01

DRAWING TITLE
LAYOUT PLAN

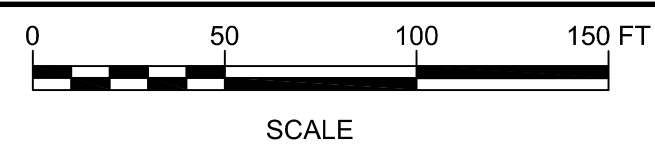
DRAWING NUMBER
GE-01
9 OF 23



LEGEND

	PROPOSED PAVEMENT
	ARCHAEOLOGICALLY SENSITIVE AREA
	PROPOSED HANGAR
	PROPOSED TURF AREA
	TSA TAXILANE SAFETY AREA
	TLOFA TAXILANE OBJECT FREE AREA
	PAVEMENT TRANSITION
	TSA TAXIWAY SAFETY AREA
	TOFA TAXIWAY OBJECT FREE AREA

- NOTES:**
- HORIZONTAL DATUM: MAINE STATE PLANES, WEST ZONE, US FOOT.
 - VERTICAL DATUM: NAV88
 - SEE TYPICAL SECTION ON SHEET TS-01.
 - DESIGN CODES:
 - RUNWAY: ADG A/B-I SMALL AIRCRAFT
 - TAXIWAY: TDG -1B
 - THE LOCATION OF THE TAXILANE SHIFTED DUE TO THE DISCOVERY OF ARCHAEOLOGICALLY SENSITIVE ARTIFACTS LOCATED NEAR THE PREMISES



K:\AUBURN-LEWISTON MUNICIPALITY\19186.01_CDS_HANGARS\DRAWINGS\SHEET FILES\PERMITTING\19186.01_LAYOUT.DWG